

Birmingham Bullring

MAXIMUS

14M X 7.5M MEGA BANNER

	WIDE	HEIGHT
Finished/Trim Size	14000 mm	7500 mm
Safe Visual Area*	13800 mm	7300 mm
Safe Bleed Area*	14200 mm	7700 mm

IMAGE PRINTED ONTO 450gsm REINFORCED PVC

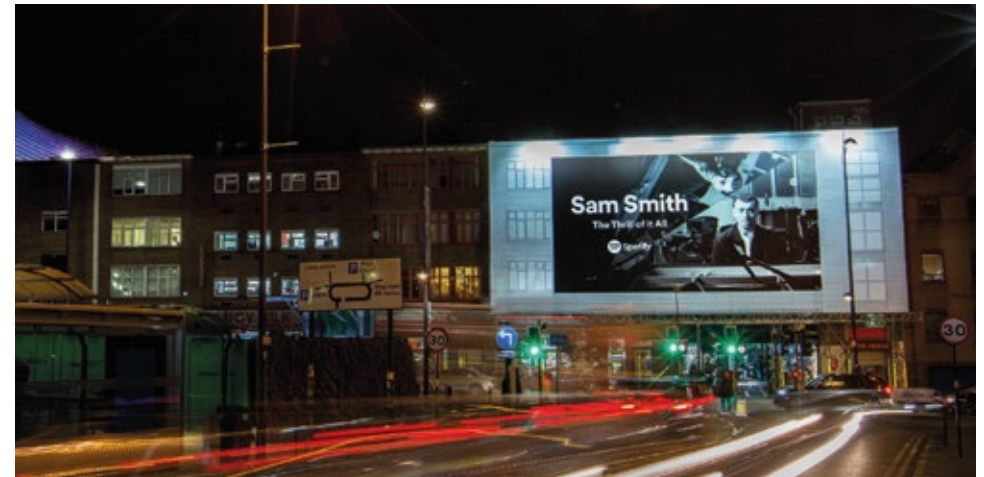
Print Artwork Specifications

- **Images must be 300 ppi** (minimum) to ensure quality reproduction.
- All **fonts must be converted to outlines** for upscaling.
- Any transparency must be flattened.
- All files must be presented as **CMYK**.

Do not include spot/special colours or RGB as colour shifting may take place.

Acceptable File Formats For Printing

- **PDF:** High-Resolution file Adobe PDF, all images used during artwork preparation should be 300dpi
- **EPS:** Encapsulated Post Script
- **JPG:** High-Resolution JPEG - 300dpi
- **TIFF:** High-Resolution TIFF - 300dpi



IMPORTANT

- Artwork must be presented as **1:10 scale at 300dpi**.
It is not necessary to increase the dpi past 500.

How to supply artwork to us

- We accept files **up to 10mb electronically via email**.
- For larger files, **up to 5GB in size**, we recommend using an **online file transfer platform such as "weTransfer"**.
- Alternatively, you can send us your file(s) on a memory stick, CD.

Birmingham Bullring

MAXIMUS



drawing in scale

* Safe visual area: the size inside the trim is to ensure any important information in your artwork is not trimmed.

* Safe bleed area: the size outside the trim is to ensure that no unprinted edges occur in the final trimmed artwork.